



# cpo and renewal guide

are you considering a cpo or renewal treadmill?

## our program:

WOODWAY USA is the only entity authorized to sell Certified Pre-Owned (CPO) and Certified Renewal Treadmills. We do not authorize or endorse any secondary resellers of WOODWAY Treadmills.

The WOODWAY manufacturing facility maintains the highest standards in quality and comfort. Due to the unique slat-belt design, WOODWAY treadmills require specific service procedures and custom components that only WOODWAY can produce.

Our CPO and Renewal program is designed to provide you with an alternative option to new treadmills via a rigorous and quality-assurance inspection, allowing you to maintain your high standards and great expectations in WOODWAY treadmills.

## what's the difference between cpo and renewal?

### Certified Pre-Owned (CPO)

This is a small, selected percentage of treadmills to be resold in a "used" condition. These treadmills undergo a multi point inspection to ensure they are in good mechanical condition with plenty of miles and hours remaining in the product life cycle. Only WOODWAY CPO products come with an authentic 2 years parts and 1 year labor (or the remainder of original warranty based upon age) WOODWAY Manufacturer Warranty.



used, in good mechanical condition



numerous hours remaining



numerous miles remaining



multi-point inspection



1 year parts & labor guaranteed



ready to ship immediately

### Certified Renewal Treadmills

The heavy duty frame of WOODWAY treadmills, allows us to recycle, renew, and rebuild our products from the ground up through a combination of new and refurbished components. Certified Renewal treadmills will look and feel like new. Sometimes these units are discontinued styles and options. Only WOODWAY Certified Renewal Treadmills come with an authentic 2 year parts and 1 year labor WOODWAY Manufacturer Warranty.



inspected for structural issues



some parts are recycled



some parts renewed for reuse



"like new" treadmill is built



2 year parts, 1 year labor guaranteed



ready to ship immediately

## **purchasing outside of WOODWAY:**

Please understand that if you do choose to purchase outside of WOODWAY, you do so at your own risk. WOODWAY does not endorse, authorize, or allow, any third-party sellers of our treadmills.

Third-party sellers do exist, and they sell used WOODWAY treadmills under a false pretense - there warranties are not "factory" warranties; the parts they use are not "factory" parts; and their service techs are not certified by WOODWAY.

If you do choose to purchase through one of these third-party vendors, please feel free to contact WOODWAY for consultation and to check the serial number. We also advise you to ask the following questions, ask for pictures, and walk-away if anything is amiss.

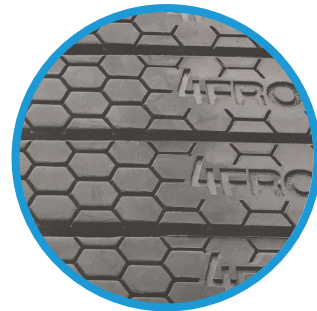
## **questions you should ask:**

### **May I see images of the slats?**

The WOODWAY running surface is designed to last longer than any other conventional treadmill belt, but after years of use it will show wear and this is a good indicator of total usage.

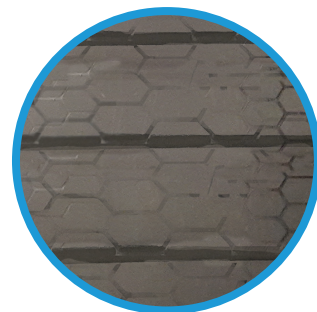
**1**

Very little to some visible wear. Running pattern should be forming in the center of the running surface. The "WOODWAY" or "4Front" logo may be fading but should still be visible. A treadmill in this condition as the majority of the lifespan of the running surface remaining.



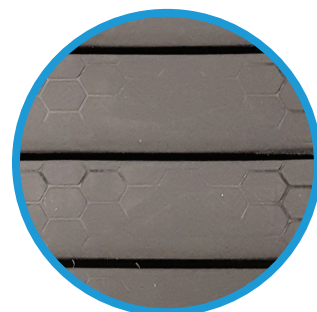
**2**

Moderate visible wear with a prominent running pattern of in the middle of the running surface. Logo on treads may be fading or barely visible. Treadmills showing very visible wear with all other components in good working condition can still be a great value.



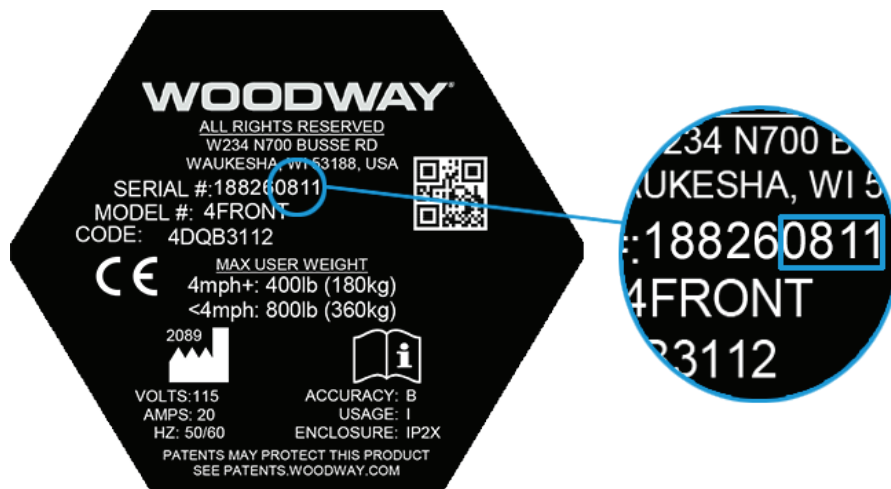
**3**

Very noticeable wear pattern with a indentation due to extensive usage. Slats will be worn smooth, with a groove forming due to years of heavy usage and repeated steps in the same area. The running surface may be uneven. Treadmills in this condition often have other internal components that are much more worn.



### What year was the product manufactured?

This can easily be determined by reviewing the serial number that is located on the back of the display board. The last four digits of the serial number represent the month and year. In the example below, this treadmill would have been built in August of 2011 (0811).



### How many miles and hours are on this piece of equipment?

Inquiring about the amount of miles or hours on the piece of equipment will help you understand the overall amount of wear on the treadmill. WOODWAY treadmills can last up to 200,000 miles when properly maintained.

### What steps have been taken to ensure the quality of the drive system and transportation components?

Preventative maintenance is key to the overall quality and longevity of any piece of equipment. Proper care can greatly enhance the lifespan of WOODWAY drive system.

### Is the treadmill near silent while running?

WOODWAY treadmills have a ball bearing running surface which produces very little friction. Without proper care and maintenance the bearings can become worn and need to be replaced. This is quite intrusive and costly.

### Have the side covers been removed to check internal components?

The overall integrity of the lateral belts is a key factor as they hold the running surface together and may be damaged from any number of reasons. If the lateral belt is damaged and the running surface is compromised, WOODWAY does not recommend using the treadmill without a full belt replacement.

REV 200831